

MONTHLY MEMBERSHIP PROGRESS REPORT

District 14 P

Results as of: 5/31/2020

GMT:

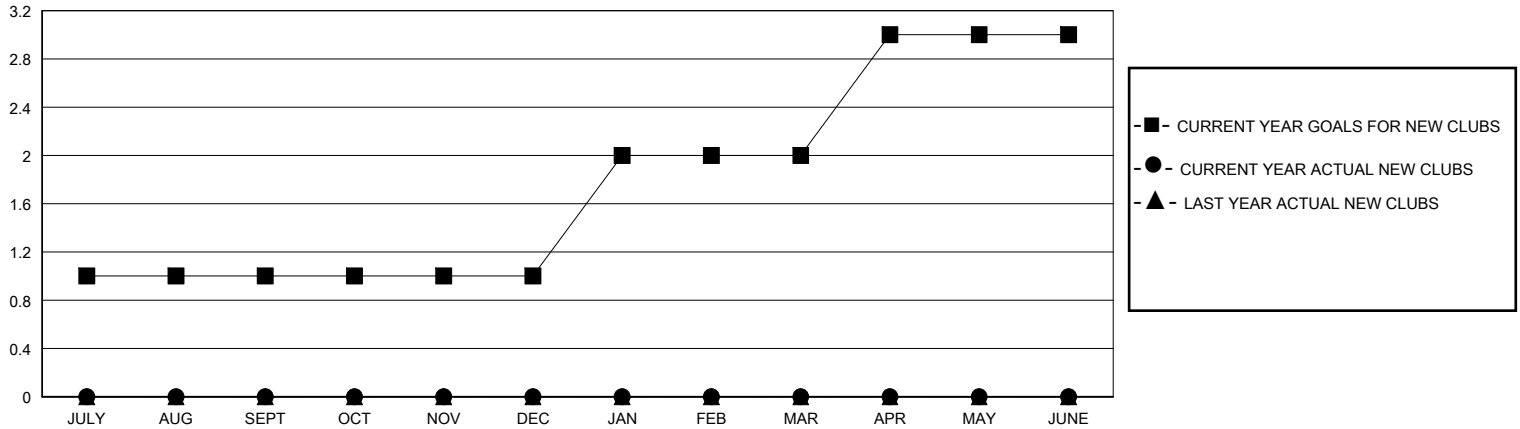
LOCATION PENNSYLVANIA

GMT CA

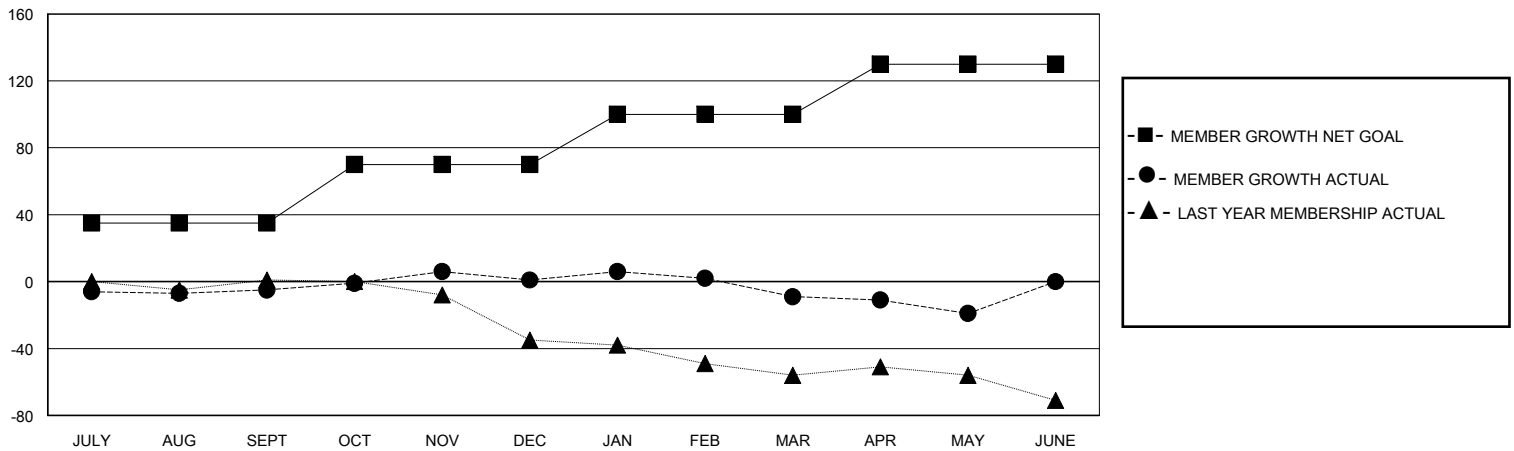
| Clubs | | | |
|-----------------------|---------------|-----------|---------------|
| RESULTS FOR 2019-2020 | | | |
| QUARTER | NEW CLUB GOAL | NEW CLUBS | DROPPED CLUBS |
| JULY/AUG/SEPT | 1 | 0 | 0 |
| OCT/NOV/DEC | 0 | 0 | 0 |
| JAN/FEB/MAR | 1 | 0 | 0 |
| APR/MAY/JUNE | 1 | 0 | 0 |

| Members | | | |
|-----------------------|------------------------|----------------------|--|
| RESULTS FOR 2019-2020 | | | |
| QUARTER | MEMBER GROWTH NET GOAL | MEMBER GROWTH ACTUAL | DROPPED MEMBERS ACTUAL (including transfers) |
| JULY/AUG/SEPT | 35 | 15 | 19 |
| OCT/NOV/DEC | 35 | 23 | 15 |
| JAN/FEB/MAR | 30 | 15 | 24 |
| APR/MAY/JUNE | 30 | 1 | 11 |

GOALS AND ACTUAL NEW CLUBS CUMULATIVE



GOALS AND ACTUAL MEMBERS CUMULATIVE



| | | |
|------------------------|---|-------------------------------------|
| DROPPED CLUBS: 0 | 21 CLUBS OF 40 ADDED 1 OR MORE NEW MEMBERS | GENDER DISTRIBUTION |
| | | MALE 832 (75.50%) |
| | | FEMALE 270 (24.50%) |
| DROPPED MEMBERS | CLICK HERE FOR CUMULATIVE MEMBERSHIP DATA | TOTAL FAMILY UNIT MEMBERS 205 |
| DECEASED 25 | | FAMILY MEMBERS PAYING HALF DUES 104 |
| CLUB CANCELLED 0 | | |
| OTHER 44 | | |
| TOTAL 69 | | |